



OASIS

1-4 1 1 38

Open plan or 1-4 Bedrooms, Kitchen and Lux Bathroom

Discover **Oasis**, a fully fitted relocatable tiny home perfect for individuals, couples, or smaller families. Tailored to your preferences, this versatile dwelling can be customized to accommodate anywhere from a single bedroom up to four. It boasts a generous kitchen and a cozy bathroom, providing a comfortable living space.

Key Features

- ✓ Strong thermally insulated walls and roofs
- ✓ Australian Compliant electrical
- ✓ Optional Air Conditioner, Cladding and Base Trailer
- ✓ Fast on-site assembly
- ✓ Double glazed insulated windows and doors
- ✓ 3 Year Warranty*
*Terms & conditions apply
- ✓ Bathroom with luxuriously oversized shower
- ✓ Engineered quartz stone benchtop kitchen

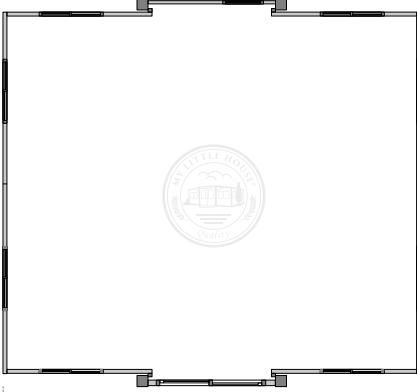
OASIS | Open plan or 1-4 Bedrooms, Kitchen and Lux Bathroom

1-4  1  1  38 

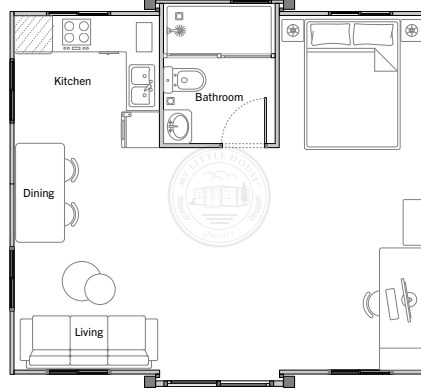
Closed Length 5.9m
Closed Width 2.0m

Open Length 5.9m
Open Width 6.3m

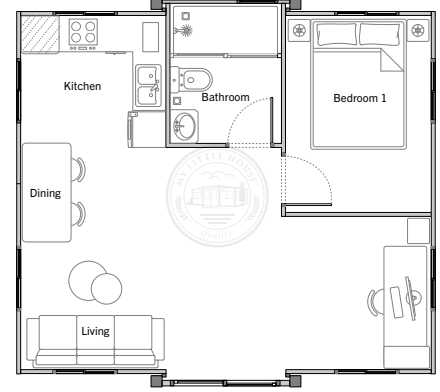
Standard Open Plan Design



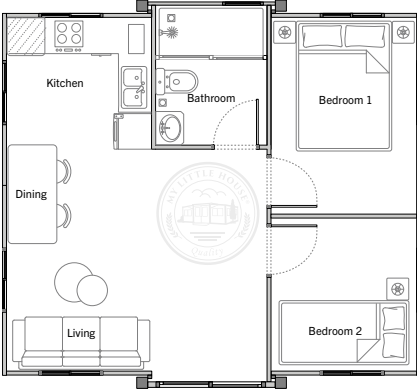
Standard Open Plan with Bathroom & Kitchen Design



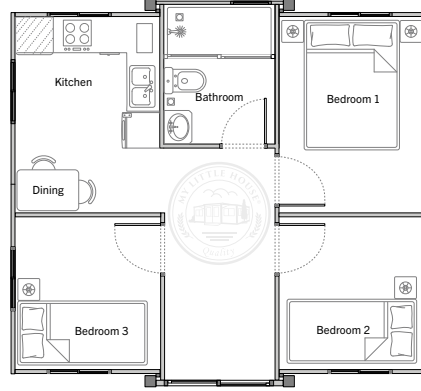
1 Room with Bathroom & Kitchen Design



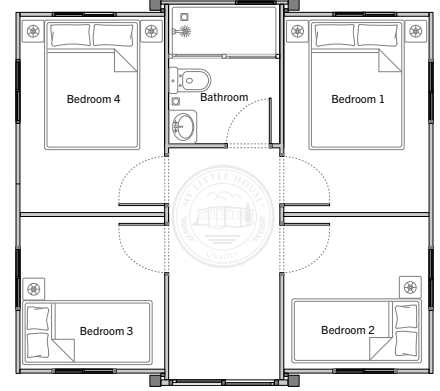
2 Room with Bathroom & Kitchen Design



3 Room with Bathroom & Kitchen Design



4 Room with Bathroom Design



For illustration purposes only. Contact our Sales Representatives for full list of inclusions.

Specifications

FRAME	<ul style="list-style-type: none"> Steel frame, zinc rich primer undercoat finished with an epoxy paint in Grand Grey.
FLOOR	<ul style="list-style-type: none"> Magnesium concrete composite or high density PVC flooring (model dependant), both offer high performance with little to no maintenance, rot and insect resistant and with great thermal properties.
ROOFS	<ul style="list-style-type: none"> Centre section is steel clad and thermally insulated with glass-wool. Side roofs are steel or fibreglass clad to the exterior and steel inside with thermally insulated expanded polystyrene.
WALLS	<ul style="list-style-type: none"> Thermally insulated with expanded polystyrene and clad with steel to both the inside and exterior.
WINDOWS & DOORS	<ul style="list-style-type: none"> Windows are aluminium framed double glazed thermally insulated using toughened glass panels with flyscreens where applicable. External doors are aluminium framed double glazed insulated using toughened glass panels. Internal doors to bathrooms are aluminium framed and finished with frosted privacy glass.
ELECTRICAL	<ul style="list-style-type: none"> EDB (Electrical Distribution Board) installed and wired ready for air conditioning. Pre-wired switches and power points (most pre-installed where possible, model specific). Pre-wired light cables and supplied with quality low power use L.E.D lights. Mains power connection wire, ready for your licenced electrician to connect.
BATHROOM	<ul style="list-style-type: none"> Luxurious full length shower with semi-frameless glass screen. Basin with chrome tapware and pop up waste. Wall cabinet with polished mirror and hanging rail.
KITCHEN	<ul style="list-style-type: none"> Glamorous L shape kitchen with white quartz engineered stone bench top and rear mini splash riser, white cabinets and overhead cupboards to one side. Stainless steel double bowl sink with ceramic cartridge flick mixer tapware. Packaged pre-assembled for quick and seamless installation.

